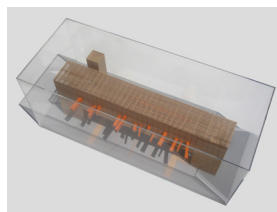


MONUMENT COMMEMORATING  
THE 20TH ANNIVERSARY OF SEASIDE



PROJECT  
**PEDESTRIAN BRIDGE**

TYPE  
**COMPETITION**

LOCATION  
**SEASIDE, FL**

DATE  
**2004**

The open competition called for a ceremonial landmark to commemorate the 20th Anniversary of Seaside, Florida. The landmark gateway reflects Seaside's established traditions and bridges the community's past with the future. The competition program was intentionally left loose. This design was a respond to the legacy and attitudes represented by Seaside and ultimately New Urbanism and the associated formal language. The structure simultaneously serves as a celebration and critique. The development of a functional pedestrian bridge that spans the conventional land approach of Highway 30-A, was developed as a hybrid viewing machine. The dialectical faces simultaneously provide orchestrated views of composed moments highlighting Seaside and its unique architectural identity, and the horizontal band window that surveys alternate development represented as spasmodic sprawl and speed of economy and technology. The two identities represent the detachment of Seaside from the conventional or even real and to heighten the automobile's threshold and the superficial nature of its orchestration - both physical and social. Located at the western edge of Seaside, the monument serves as gate, frame, filter, lens and bridge.



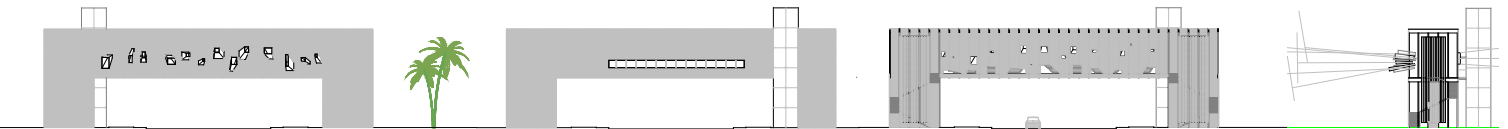
**BORDEN PARTNERSHIP**  
1918 LAUDERDALE STREET  
HOUSTON, TEXAS 77030

[www.bordenpartnership.com](http://www.bordenpartnership.com)





VIEW FROM THE EAST



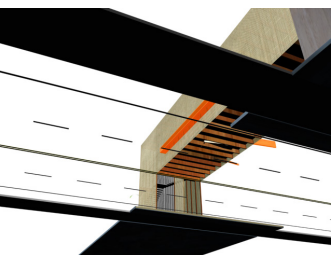
EAST ELEVATION

WEST ELEVATION

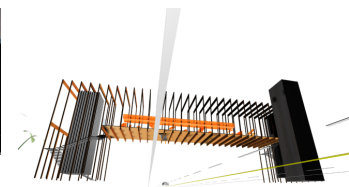
LONGITUDINAL SECTION

TRANSVERSE SECTION

WORMS EYE VIEW



STRUCTURAL SKELETON



VIEW OF INTERIOR



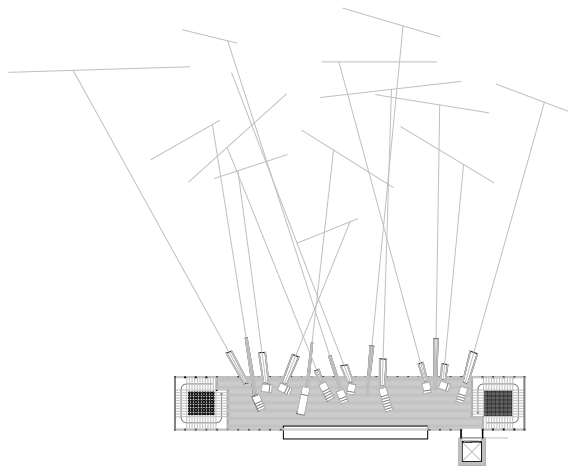
FUNNEL SIDE







VIEW FROM THE WEST



BRIDGE LEVEL PLAN

The construction system is a heavy timber frame clad in open joint siding. The latticed surface allows a rhythmic shadow to the interior platform providing a ghosted vision of the entire horizon (thus applying greater prominence to the orchestrated frames) and maintaining a transparency to the urban position in the landscape. The same lattice system wraps the roof plane allowing the harsh light and transitional weather to penetrate the structure. As an oasis in the landscape the structure provides shelter while maintaining a connectivity to the landscape that it joins. Material dimensional bays define the proportional system.

A gateway constructed at the western edge of Seaside marks the threshold of a unique community. Serving as an oculus for the transitory automobile traffic, the individual looking onto the framed views of an orchestrated landscape, the horizon of the growing surroundings, and finally the horizon of the vast gulf the gateway serves as an oculus for the entire urban setting to partake. The bridge spans 30-A to allow for pedestrian transfer through an optical terrain proving vistas, isolated vantages and framing moments from the first twenty years of the Seaside community.

Simple ribbed heavy timber construction is sheathed in an open painted lattice. The striated face provides a transparent mask through the gateway and across the horizon. Either end is framed by helix stairs that encircle a grid of two-story steel wind chimes transitioning from bass to tenor as one approaches the coastline.

The pavilion serves as a frame: a literal provider of specific vantages isolating distinct moments and chronologically gathering the evolution of the community's distinct history, development and collected urban vision that defines Seaside.

RIBBON SIDE

FRAME PORTALS

